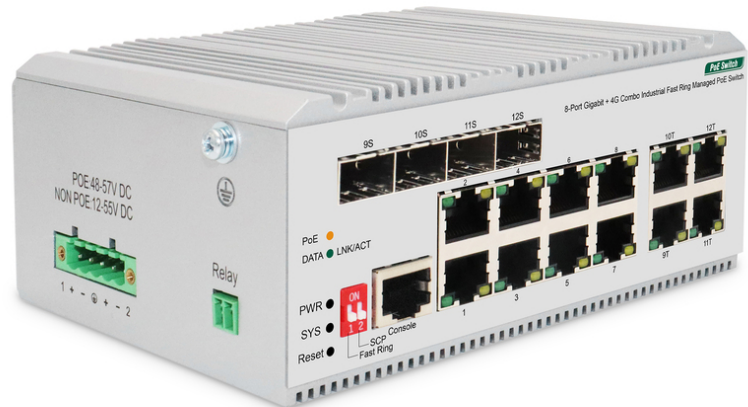


DIGITUS 8 port Gigabit Ethernet network PoE switch, industrial, L2 managed, 4 SFP uplink

DN-651139

EAN 4016032489238



Industrial 8+4 L2 managed Gigabit Ethernet PoE Swi 8 Port PoE GE RJ45, 4 Port GE SFP

The DN-651139 Industrial network switch provide 8 x 10/100/1000Mbps RJ45 ports and 4 Gigabit Combo ports. The RJ45 ports from 1-8 support PoE power supply with a maximum of 30W for each port. DN-651139 offers excellent security policy, QoS policy, and rich VLAN function. Additionally, it has a ring network function that allows you to set up a ring network. With this feature, the switches form a ring network topology manually. The ring network is redundant, highly reliable, and won't affect data forwarding in case a link is broken. The device is designed with a no-fan, low power consumption design, making it easy to use, compact, and beautiful. It is also simple to install. The product meets Ethernet standards, has lightning protection, static protection mechanisms, and operates in a temperature range of -40°C to 75°C. This guarantees stable performance, safety, and reliability. V1 can be widely used in various broadband data transmission fields such as intelligent transportation, telecommunications, security, financial securities, customs, among others.

The DN-651139 Industrial network switch provide 8 x 10/100/1000Mbps RJ45 ports and 4 Gigabit Combo ports. The RJ45 ports from 1-8 support PoE power supply with a maximum of 30W for each port.

- Standard: IEEE 802.3, IEEE 802.3u, IEEE 802.3ab, IEEE 802.3z, IEEE 802.3x, IEEE 802.1X, IEEE 802.1q, IEEE 802.1p, IEEE 802.1d, IEEE 802.1w, IEEE 802.3ad, IEEE 802.3af, IEEE 802.3at
- Interface: 8*10/100/1000Mbps RJ45 Ports, 4*10/100/1000Mbps Combo, 1 Console Port
- Indicator: PWR, LNK/ACT, PoE, SYS
- Network Media: 10BASE-T: UTP category 3, 4, 5 cable (≤100m), 100BASE-TX: UTP category 5, 5e cable (≤100m), 1000BASE-T: UTP category 5e, 5 cable (≤100m), 1000BASE-X: MMF, SMF
- MAC Address Table: 8K, Auto-learning, Auto-update
- Jumbo Frame: 9216Byte
- Packet Buffer: 4.1M bit
- Transfer Mode: Store-and-forward
- Packet Forward Speed: 17.86Mpps
- Switching Capacity: 24Gbps
- Dimensions(L*W*H): 145*109*62mm
- Fan Quantity: Fanless
- Power Supply: 200W
- PoE Power Budget: 185W
- PoE Port: Port1~8
- PoE Power On RJ45: Mode A 1/2(-), 3/6(+)
- PoE Power Output: 30W(MAX)
- Green Energy Saving: IEEE 802.3az

- Input Power Supply: DC:48-57V
- Operating Temperature: -40°C ~ 75 °C
- Storage Temperature: -40°C ~ 80 °C
- Operating Humidity: 5% ~ 95% non-condensing
- Storage Humidity: 0% ~ 95% non-condensing
- Surge Protection: Differential mode ±2KV, Common mode ±6KV
- MTBF: >100000 hours
- Electrostatic Standard: Contact ±6KV, Air ±8KV
- Software Specification: spanning Tree, IEEE 802.1D -Spanning Tree, IEEE 802.1w -Rapid Spanning Tree, IEEE 802.1s -Multiple Spanning Tree, BPDU Guard, STP Root Guard, Loop Detection
- VLAN: Management: VLAN, Private VLAN, Voice VLAN, Surveillance-VLAN, Q-in-Q (Double Tag), 802.1v Protocol VLAN, MAC-Based VLAN, Port IEEE 802.3ad with LACP(Dynamic), Static Trunk EEE, Jumbo Frame, Error-Disable, IGMP Snooping: IGMP Snooping v1/v2/v3, MLD Snooping v1/v2, MVR, QoS Features, Hardware Queues, Class Of Service, Port Based, 802.1p, CoS, DSCP, IP Precedence, TCP/UDP (IPv4/IPv6), Rate Limiting Ingress Egress, Priority Queue Scheduling, WRR, Strict Priority, DSCP & CS, IPv4 QoS (QCEs)
- IPv6 QoS (QCEs), Security, Port Security, Port Isolation, IEEE802.1x AAA, ACLs
- L2+/L3/L4, IPv6 Support, Management Access List, Management ACL/Management ACE, IP Source Guard (IP-MAC-Port-VALN Binding)
- IP Source Guard (IP-MAC-Port Binding), Dynamic ARP Inspection, Storm Control, RADIUS/TACACS+, RADIUS Authentication (RFC2138), DDoS Prevention, HTTPs and SSL (Secured Web), SSH v1.5/v2.0 (Secured Telnet Session)
- DHCP Snooping, DHCP Relay, Management, SNMP (v1, v2c, v3), RMON (1, 2, 3 & 9 groups), Software Upgrade, Configuration Export/Import
- Event/Error Log: Syslog, Management Access Filtering, Console, SNMP, HTTP/HTTPS, Telnet, Port Mirroring, LLDP (IEEE802.1AB), LLDP-MED, UDLD, DNS Client, Traceroute, Ping, Cable Test, DDM1, NTP/ SNTP (RFC2030)
- IPv6 Support: Dual IPv6/IPv4 stack, IPv6 Web/SSL, IPv6 SNTP (Simple Network Time Protocol), IPv6 Telnet / SSH, IPv6 Ping/Trace route, IPv6 TFTP, IPv6 RADIUS/TACACS+, IPv6 SNMP,
- PoE Management: Port Config, Alive Checking for PD
- Industrial usage: no
- Managed: no
- Outdoorsuitable: no
- PoE (Power over Ethernet): no
- Protection against vanadism: no
- VLAN: yes

Package contents

- 8-Port Gigabit + 4G Combo Industrial Fast Ring Managed PoE Switch

- Manual

Logistics						
	Number (pcs)	Weight (kg)	Depth (cm)	Width (cm)	Height (cm)	cm ³
Packaging Unit Carton	10	0.00	45.50	25.00	40.50	46,068.80
Packaging Unit Inside	1	0.00	0.00	0.00	0.00	0.00
Packaging Unit Single	1	0.00	23.40	19.00	8.60	3,823.56
Net single without Packaging	1	0.00	14.50	10.90	6.20	979.90

More images:

